

# CHALLENGER OF RECORD & DEFENDER

## AMERICA'S CUP 36

### Interpretation 085

of

### AC75 Class Rule Version 1.27 issued 15<sup>th</sup> January 2021

#### Rule References:

18.2 Local hollows or distortions of **sail skin** edges shall be bridged for all sail measurements.

Interpretation 057

#### Question:

1. Consider the **mainsail** skin **leech** profile illustrated in Figure 1. The **leech** is hollow at the intersections of the aft edge of the **sail skin** and both the 50% and 75% girth lines. The hollow extends as illustrated in Figure 1. Will this hollow be bridged according to rule 18.2 with the 50% and 75% girth lengths measured to the grey dotted line?
2. Consider the **mainsail** skin **leech** profile illustrated in Figure 2. The **leech** is hollow at the intersections of the aft edge of the **sail skin** and both the 50% and 75% girth lines. This hollow extends as illustrated in Figure 2. Will this hollow be bridged according to rule 18.2 with the 50% and 75% girth lengths measured to the grey dotted line?
3. In the measurement of sail girths, if a hollow is encountered at the intersection of the aft edge of a **sail skin** and a "% girth line" is there any limit to the extent of the local hollow that is bridged according to rule 18.2 (assuming that the hollow is not a global hollow extending the full length of the **leech**)? If there is any limit imposed on the extents of local hollows could the **Rules Committee** please define these limits?

# CHALLENGER OF RECORD & DEFENDER

## AMERICA'S CUP 36

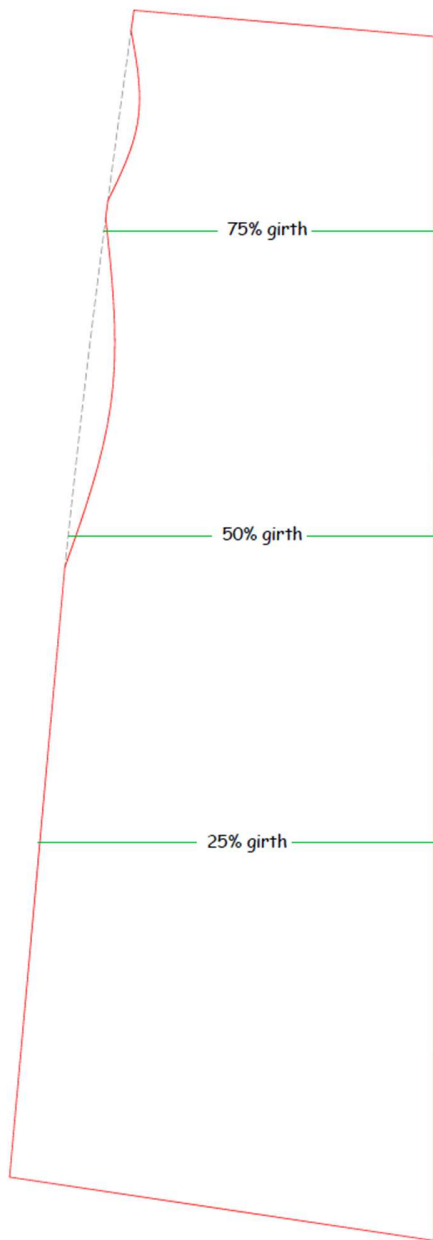


Figure 1

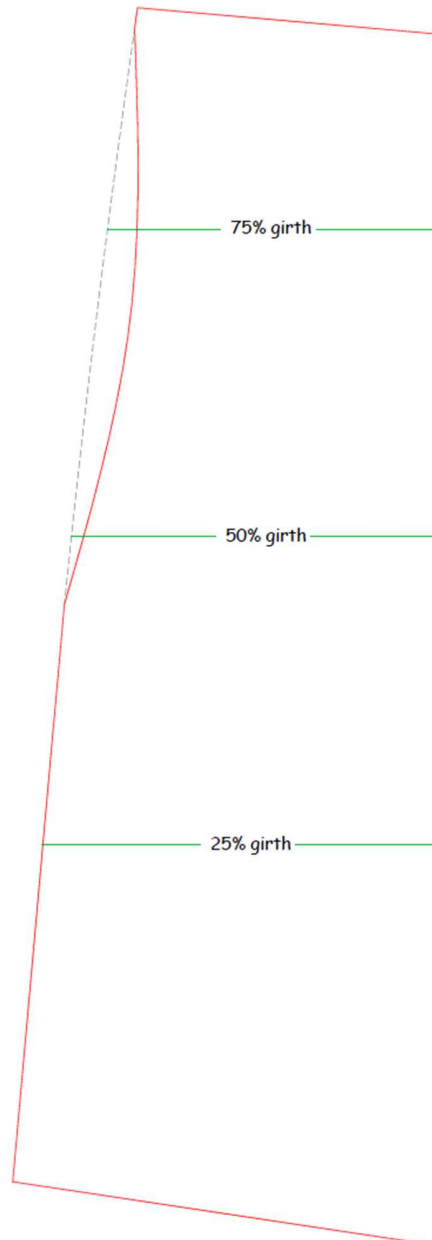


Figure 2

# CHALLENGER OF RECORD & DEFENDER

## AMERICA'S CUP 36

### Interpretation:

The term "local" is nowhere defined in the **AC75 Class Rule**.

An OED definition of "local", "relating to a particular region", is an adequate definition of local and in this context; the sentence means that the measurement point is related to the particular hollow.

A local hollow for purposes of rule 18.2, and in the context of the interpretation request, is any concavity in the **leech** profile of a **mainsail sail skin** that affects or could affect only a single sail measurement.

### Answers:

1. No, since it is stated that the lower hollow affects both the 50% girth and the 75% girth measurements.
2. No, since the hollow affects more than a single girth measurement, it is not a local hollow.
3. Further to the interpretation above, Rules 18 and 20 contain limitations to sails as well as definitions such as 35.88.

END