

# CHALLENGER OF RECORD & DEFENDER

## AMERICA'S CUP 36

### AC75 Procedure for Compliance 002 of AC75 Class Rule Version 1.2 issued 10 December 2018

*This document is a procedure issued by the 36<sup>th</sup> America's Cup Rules Committee, as such, it may be amended at any time, in part or in full, to reflect improvements, clarifications, class rule amendments, or any other reason the Rules Committee deems appropriate. In reading this procedure, AC75 Class Rule 2 and the definitions shall apply.*

**Rule Reference:**

Rule 22.12 & 22.10

**Procedure Annotation:**

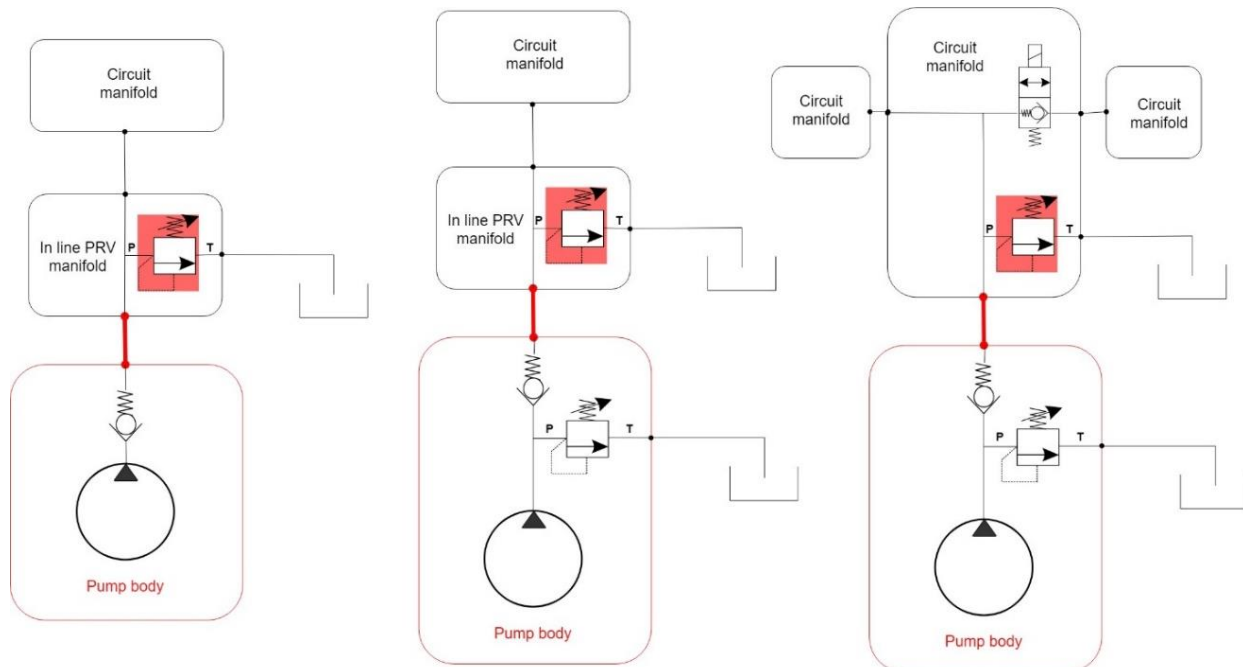
According to Rules 22.12 and 34.1 the **Rules Committee** hereby specifies the following pressure relief valve(s):

- HYDAC, model "DB4E - 01 X - 630 P 600" set to 600 bar opening pressure.

The pressure relief valve must be sealed (at the factory or by the **Measurement Committee**) and present immediately downstream of each pressure source, such as pumps and pressure intensifiers, connected to **force input devices**. For this purpose, "immediately downstream" means there shall be no connections between each pressure source and the pressure relief valve.

The drain port of the pressure relief valve(s) must be connected to a low-pressure circuit, as per Rule 22.10, which must not exceed 6 bar at any time and at any point in the low-pressure circuit.

The following are examples of compliant circuits:



# CHALLENGER OF RECORD & DEFENDER

## AMERICA'S CUP 36

Given the subtle differences in behaviour between different brands and models of pressure relief valves, the **Rules Committee** is reluctant to approving any alternative valves or a flow rate other than the particular one of this model, when set to the specified values.

END  
AC75 Rules Committee

**CHALLENGER OF RECORD & DEFENDER**  
**AMERICA'S CUP 36**